

of I
mer
con
in t
for
T
one
coop
A
pac
Sta
tha
tele
best
O
Por
the
a ce
excl
with
nish
the
fact
and
per
tem
40,0
been
T
of n
ENC
In
cite
port
wat
prok
tion
disc
T
conc
prop
tem
engine

ndies the Navy is an important part of the Govern-
the Virgin Islands, Santo Domingo, and Haiti are
d engineers of the Navy have accomplished much
roads, lighthouses, communications, sanitation, etc.,
rd peoples.

of work undertaken is illustrated here by a single
projects in which the Bureau of Yards and Docks has
er officer of the Navy has acted in an advisory ca-
public of Haiti on all new projects since the United
d in the island's affairs. It early became apparent
ty, Port au Prince, was in sore need of a complete
n, and the civil engineer set about to provide the
e obtained out of available Haitian funds.

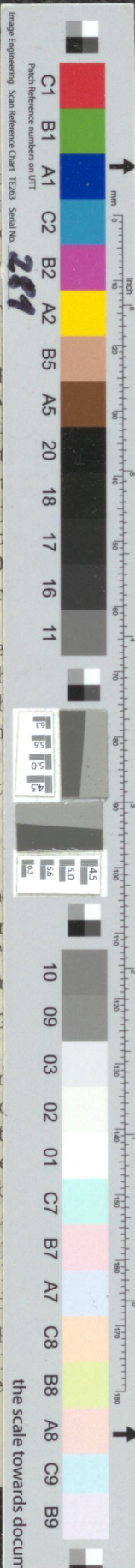
fact that there are a number of languages spoken in
it was thought that an automatic system would be
of the problem. The system as installed comprises
ge with distributing cables to 300 telephones. The
chine switching equipment for 300 lines at present,
for unlimited expansion. The power plant as fur-
ble to operate 700 lines, which was thought to meet
future requirements of the city. To insure satis-
t, the switching equipment is inclosed in glass cases,
humidity of the room is maintained at less than 70
al hygroscopic apparatus. In the distributing sys-
f lead-sheathed cable was used for outside lines and
sted pairs for interior wiring. The system has now
two years and has given perfect satisfaction.

ons for this system were drawn up and inspection
handled by the Bureau of Yards and Docks.

**INVESTIGATIONS, RESEARCH, PROPERTIES OF
ERIALS, STANDARD SPECIFICATIONS.**

various engineering studies heretofore and hereafter
of Yards and Docks has made a number of im-
itions and reports on the use of concrete in sea
given assistance in studies of this very important
ed by others—notably in the case of the investiga-
Wig and Ferguson, which were widely read and
engineering profession.

avy Yard has also furnished place and physical
a extensive test of reinforced concrete of various
mixes to determine the action of sea exposure, wind,
tide. Positive results of high value to the en-
ion and the maritime building trades have resulted.



the scale towards document