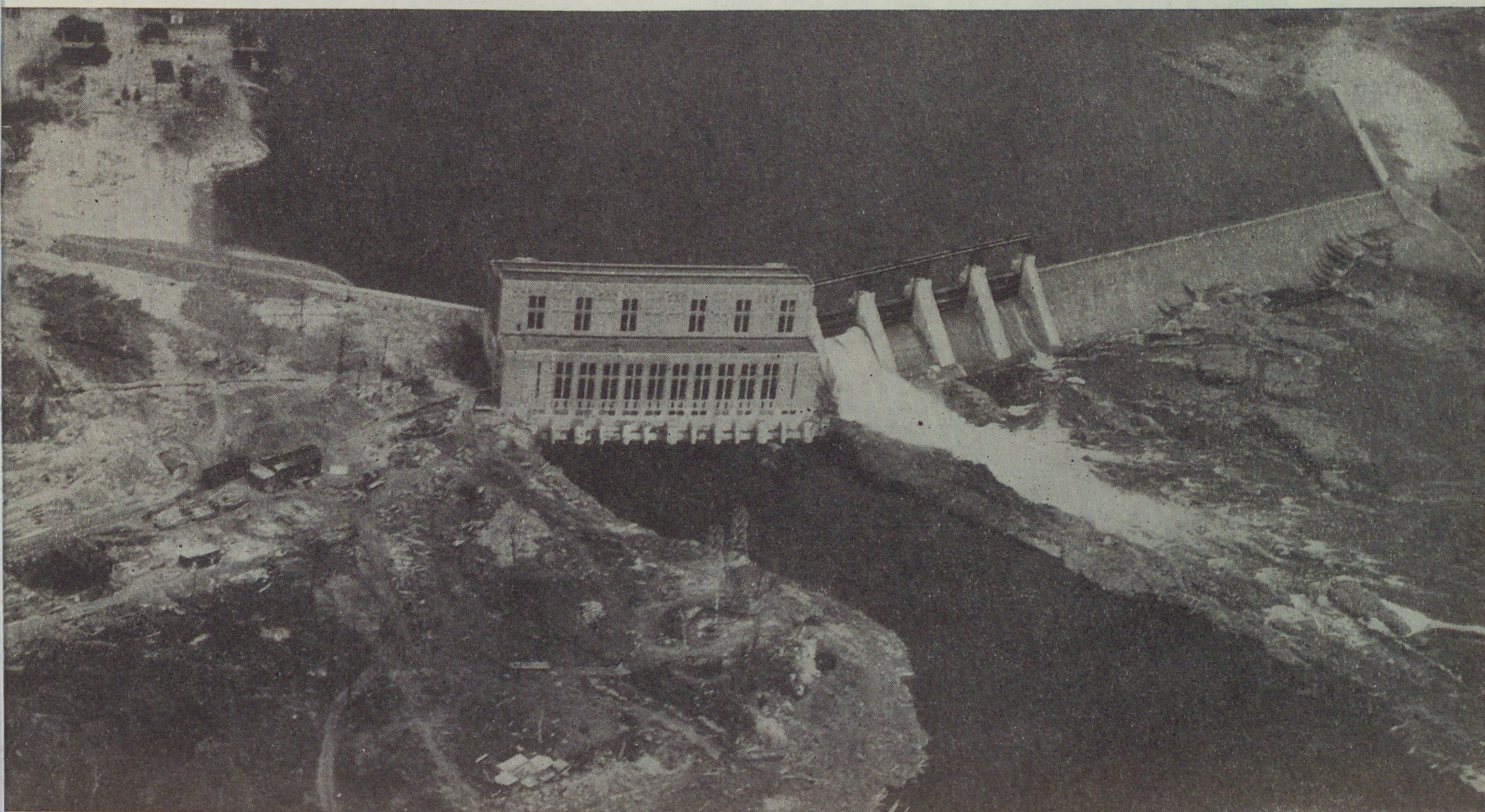


ch has made remarkable strides in the Eastern States and cellulose and cellanese silk fabrics. Evidence of this is of dollars invested and about to be invested at Cornwall, Drummondville, Que., necessitating expansion of sulphide mskaming and elsewhere, especially where black spruce obtainable. The future will see surplus northern power, at the Nelson adjacent to the Prairies used for the

manufacture of nitrate fertilizers and cyanamid as at Niagara Falls and elsewhere.

The hydro electric power companies which are serving the new rich mining districts are: The Northern Canada Power Corporation, Limited, with three plants on the Mattagami River, Ontario, with a combined capacity of 30,000 horsepower and a fourth on the Quinze River, Que.,



Water power development in the Drummondville-Quebec section—Canadian National Railways
 \$20,000,000 invested in plant and equipment, has resulted in the location of
 20 manufacturing plants and employment for 6,000 persons.