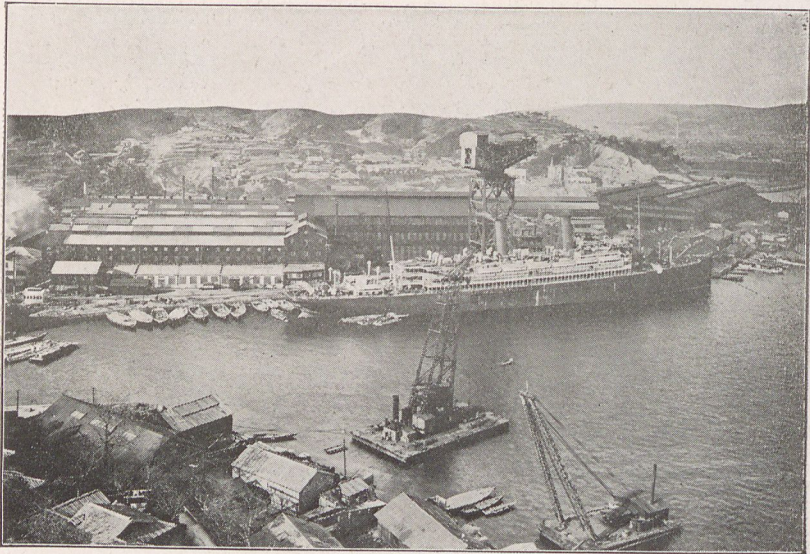


Shipyard and the Akunoura Machinery Works,—which have a water frontage extending about two miles in length on the west shore of Nagasaki Harbour, besides Saw-mills at Takenokubo (half a mile up the river Urakami) and a Patent Slip at Kosuge on the opposite shore of Tategami are comprised in this plant.



*The Akunoura Machinery Works, Nagasaki.*

THE AKUNOURA WORKS includes Fitters, Machine, Boiler, Foundry, Forge, Smiths and Tool Shops, also for the outside work section Fitting-out shop, Electric works, Copper Smiths, and Rigging shops, Power-house and Crane-men's house, etc., numbering 29 buildings in all. A hammer-head crane 178 feet in height, with a span of 54 feet and lifting capacity of 150 tons, stands on the jetty.

THE TATEGAMI SHIPYARD has six concrete building berths, the dimensions of which are:—