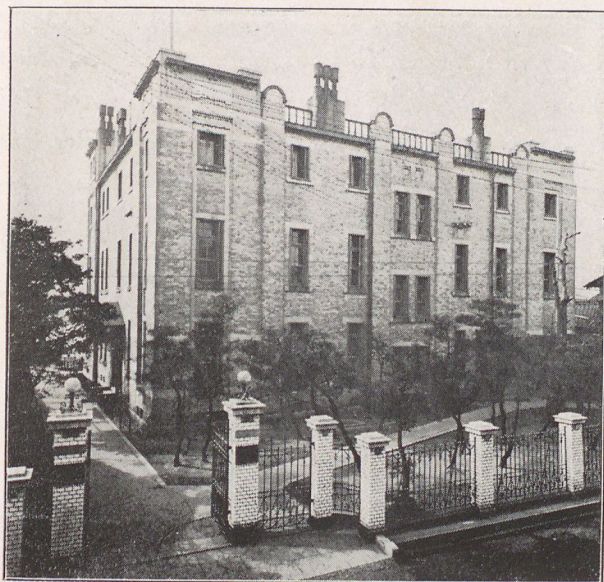


THE MITSUBISHI KOGYO KAISHA, LIMITED.

(The Mitsubishi Mining Company, Limited.)

The first time that the Mitsubishi became connected with the mining industry was the year after Mr. Yataro Iwasaki, the founder of the Mitsubishi Company, established the Tsukumo Shokai, that is to say, the year 1871, when he took over the Otokawa Colliery in the province of Kii. Later, in 1873, mining was also undertaken at Yoshioka in the province of Bitchu. The Mitsubishi purchased the Takashima Colliery off the coast of Nagasaki in 1881, and the business in this line began to prosper more and more. In the days of the Mitsubishi Sha the collieries of Shinnyu, Namazuda and Hashi-

ma came into the Company's possession, and also such metal mines as Osaruzawa, Omodani and Makimine. After the Mitsubishi Goshi Kaisha was founded, additional coal and metal mines were obtained; and



The Wakamatsu Branch Office.