

BUREAU OF BEDDING AND UPHOLSTERY



M. P. Frederick
Director

The Bureau of Bedding and Upholstery was formerly a Section in the Bureau of Inspection. As the work of this Section had very little in common with the general work of the Bureau of Inspection, it was made a Bureau on October 27, 1927, by approval of the Executive Board.

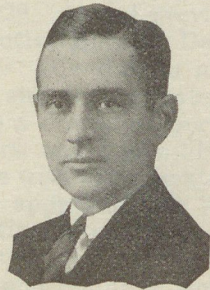
The Bedding and Upholstery Act of April 14, 1923, as amended by Act of June 14, 1925, charged the Department of Labor and Industry with the duty of requiring the manufacturers of mattresses, pillows, comfortables, and articles of upholstered furniture to state on a tag attached to such articles an exact and definite statement of the material used in filling.

Because of the lack of supervision of this industry, great latitude and license in what was put inside of articles of bedding and upholstered furniture were employed by many manufacturers throughout the United States. Highly colored descriptions were used to describe the most ordinary and inferior grades of filling materials, so that, in many cases, it was next to impossible for any one to know just what they were buying in such articles as mattresses, pillows, upholstered furniture, etc. A mattress might be labeled COTTON FELT and contain the lowest grade of cotton linters; a pillow might be labeled DOWN and contain crushed chicken feathers; and a davenport might be labeled HAIR (supposedly HORSE HAIR) and contain a dyed vegetable fiber mixed with hog hair.

At the present time only the actual materials used in the manufacture of an article coming under the provisions of the Act may be printed on the tag attached. No trade names may be used to describe the filling material. A pillow to be labeled DOWN must contain at least ninety per cent of DOWN, a tolerance of ten per cent of small feathers being allowed on account of the natural conditions in the feather industry which do not permit of perfect separation.

In connection with the offices of the Bureau is a laboratory in charge of a chemist where filling materials are analyzed.

The Bedding and Upholstery Advisory Committee at present consists of twelve representative manufacturers of Pennsylvania. These members are appointed by the Secretary of Labor and Industry who acts as Chairman of the Committee. They meet at the call of the Secretary to discuss regulations affecting the industry and questions pertaining to legislation. The Committee comprises: General Albert J. Logan, H. E. Wolf, I. H. Wolfson, all of Pittsburgh; H. Gilman Fisher, W. D. Babcock, David T. Gladding, Charles Gearhart, A. J. Schob, all of Philadelphia; John K. Herr, Lancaster; C. W. Parkinson, Waynesboro; Issac C. Decker, Montgomery; and G. W. Atlee, Chester.



Fred W. Wyble
Assistant Director