

An irrigation after the crop is harvested, generally in September or October, will benefit the trees and put the soil in condition to favor the germination and growth of the cover crop. This irrigation also aids fruit bud development and is, therefore, important from the

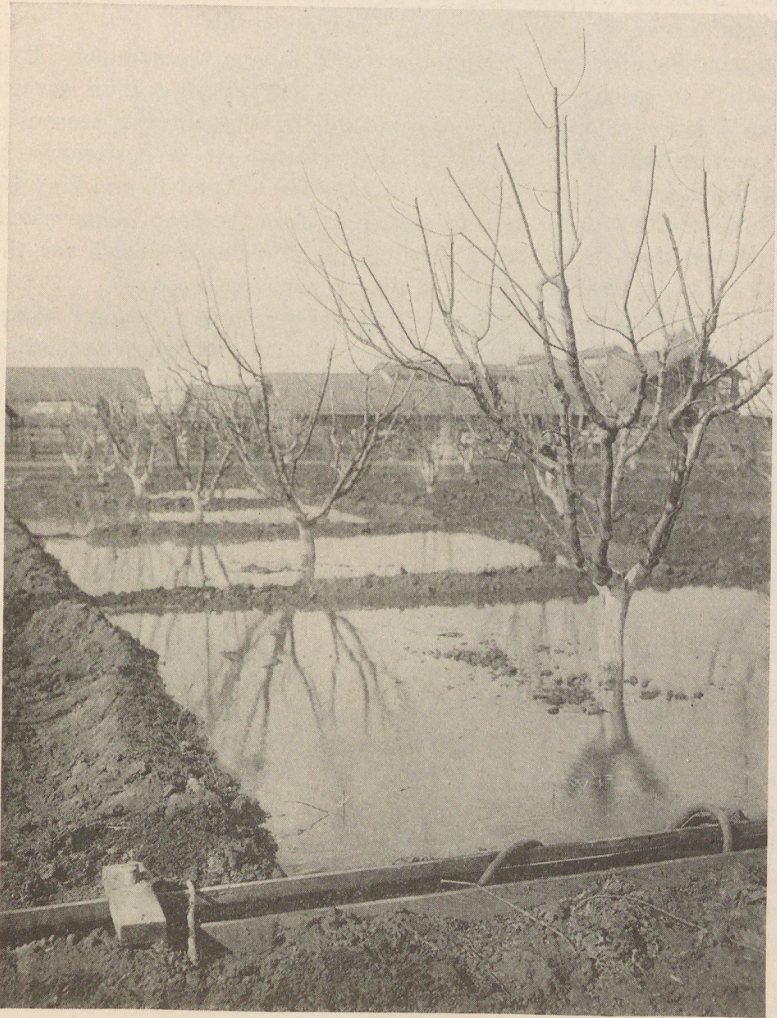


Fig. 9.—Winter irrigation by means of the check or basin system.

standpoint of the succeeding season's crop. It is desirable to keep an available supply of moisture in the soil throughout the year, since with sufficient moisture root growth may continue during late fall and winter months even though the top is dormant.